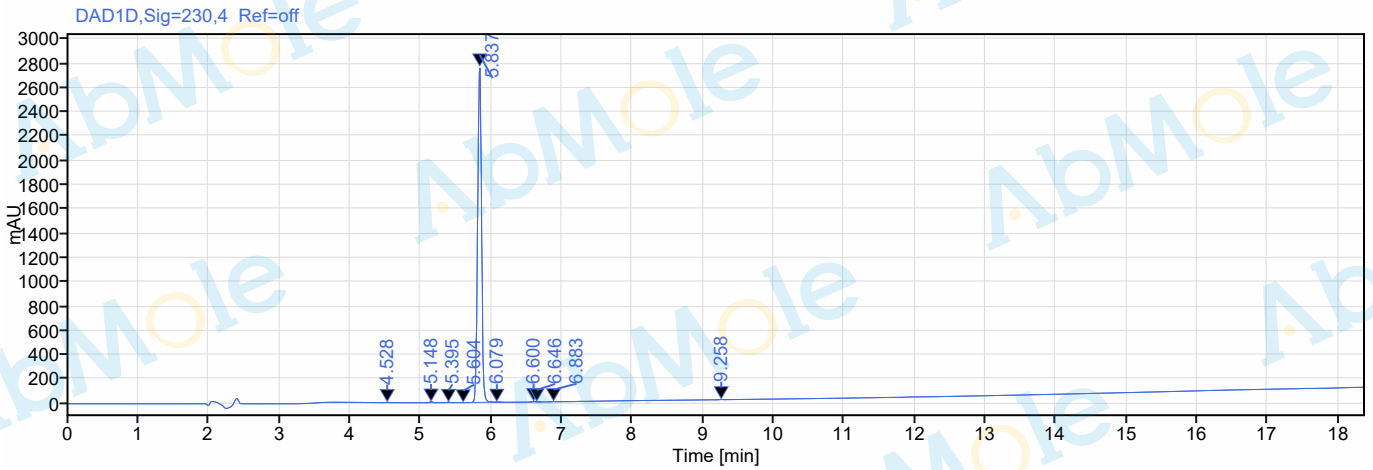




Sample name: M1990-Fostamatinib (R788)-04
Instrument: 10
Inj. volume: HPLC
Acq. method:
Processing method:
Manually modified:

Injection date:
Location:
Type:
Sample amount:



Signal: DAD1D,Sig=230,4 Ref=off

RT [min]	Type	Width [min]	Area	Height	Area%
4.528	BM m	0.14	8.15	2.55	0.08
5.148	BM m	0.16	23.66	7.19	0.22
5.395	BB	0.17	13.03	3.90	0.12
5.604	MM m	0.08	0.53	0.19	0.00
5.837	BB	0.32	10581.19	2764.49	99.15
6.079	BB	0.15	6.46	1.58	0.06
6.600	MM m	0.11	18.32	5.37	0.17
6.646	MB m	0.07	3.66	1.61	0.03
6.883	MM m	0.13	8.95	2.29	0.08
9.258	BB	0.17	7.42	1.65	0.07